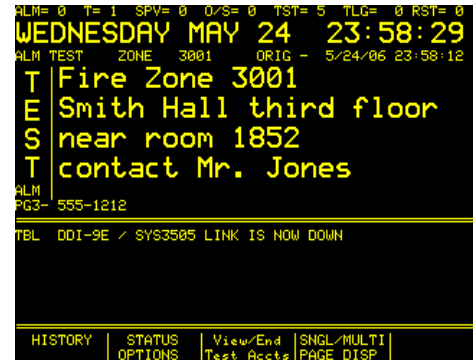


# DIGITIZE®

## Sales Advisory #207

To:	ALL DISTRIBUTORS & USERS
Subject:	New Product Option Alert
Product:	“TEST” Mode
From:	Elliott Klepner
Phone:	973-663-1011
Fax:	973-663-4333
E-mail:	elliottk@digitize-inc.com
Date:	August 15, 2006
Total pages:	8



Digitize is proud to announce the release of the “TEST” Mode. The ability to put one or more Fire Alarm Control Panels in a “TEST” mode is now available on three Digitize products. These are the SYSTEM 3505, Remote Annunciator and CGRMS. Screen shots of each product’s “TEST” mode follow the description below.

### “TEST” MODE OPTION DESCRIPTION

The “Test” Mode Option allows the SYSTEM 3505, Remote Annunciator and/or the CGRMS system to “mask” (hide) a specified alarm point or group of alarm points. This “mask” allows the alarm reporting systems to hide the masked alarms from the operator for a specified period. The Remote Annunciator and/or the CGRMS System allow viewing and verification of the tested devices and the collected test information. The tested devices in all three systems are uniquely identified and are available for report generation, printout and/or export.

These features benefit your customers in two very important ways:

- Improves dispatcher efficiency, by allowing an alarm point or building to be tested without burdening the dispatcher with unnecessary work or distraction. This decreases the risk of a dispatcher missing an actual alarm.
- Improves record keeping and report generation, by providing accurate test records in a user friendly format to the System Administrator.

The Test Mode Option is an “address specific” function, thus the Test Mode Option will operate with any Muxpad II, DGM or other alarm input. The “Test” Mode Option will also function with any vendor’s FACP, dialer, radio or alarm input.

There are two types of TEST Mode addresses, specifically generic and account specific.

**Generic** – Using wild cards for any account number position, the user can select to place a whole building, i.e. anything connected to a DGM, MUXPAD, radio or dialer, by selecting its generic address, thereby placing the whole panel in a test mode.

**Account Specific** - By entering the actual account specific address, the user can place a unique account in a test mode. By using wild cards within the account specific address, it is possible to select a partial building to be placed in a test mode, such as one or more loops within a FACP panel.

An unlimited number of devices, (DGM, MUXPAD II, Dialers, Boxes, etc.) may be placed in Test Mode via the CGRMS and RA unit, while the SYSTEM 3505 has a 30 device limit.

The Test Mode can be activated, terminated or extended from the CGRMS, SYSTEM 3505 or RA unit, while the actual test time is routed to all three products. Additionally, the test can be terminated automatically (when it times-out) or at any time. If needed, the time can also be extended without interrupting the test from the SYSTEM 3505, CGRMS or the RA.

CGRMS can place an account (or mask) in a test mode starting immediately, or pre-scheduled for a later date and time, via a pop up calendar and time setting. The operator can place an account (or mask) in test by selecting the desired number of minutes that the account should be placed in test. A range of one minute to 45 days can be activated via CGRMS. Start times can be immediate or even one year from initiation. The SYSTEM 3505 and the RA will accommodate the one minute to 45-day range.

The following pages contain screen shots of each product's "TEST" Mode.

## SYSTEM 3505 "TEST" MODE

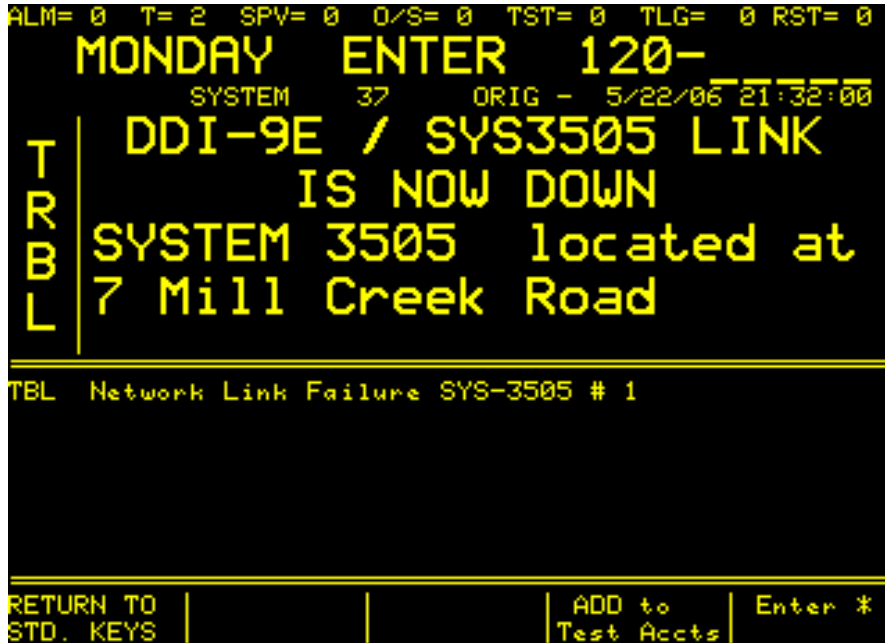
### Activation of account 3001 while in Test Mode

```
ALM= 0 T= 1 SPV= 0 O/S= 0 TST= 5 TLG= 0 RST= 0
WEDNESDAY MAY 24 23:58:29
ALM TEST ZONE 3001 ORIG - 5/24/06 23:58:12
T Fire Zone 3001
E Smith Hall third floor
S near room 1852
T contact Mr. Jones
ALM
PG3- 555-1212
-----
TBL DDI-9E / SYS3505 LINK IS NOW DOWN
-----
HISTORY | STATUS | View/End | SNGL/MULTI |
          | OPTIONS | Test Accts | PAGE DISP |
```

### Various test masks for the Test Mode

```
TEST MODE ACCOUNTS PG 1 23:57:29
-MIN-:SEC
>> 56:35 DLR 2000000000120-**
      CPP-1631, F0200, D2071A
236:43 DLR 20000105*****
      CPP-660, D7024
15:08 ZONE 100000000003001
      Fire Zone 3001 Smith Hall third floor
13:07 DLR 20003011*****
      < No Message Found >
                                     ↑ UP
                                     SCROLL
                                     ↓ DOWN
-----
END >> | GO TO | RETURN TO
TEST MODE | NEXT PAGE | MAIN SCR
```

**Enter Generic Panel Number while in Test Mode**



**Press ADD to Test Accounts, select Time and press Start Now to Initiate TEST.**



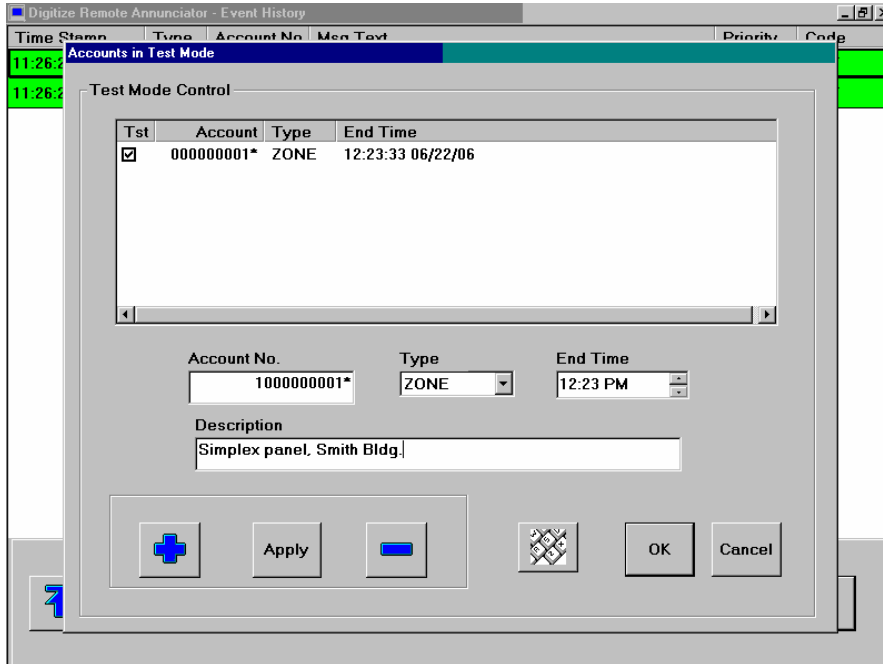
SYSTEM 3505 – TEST PRINTOUT

```

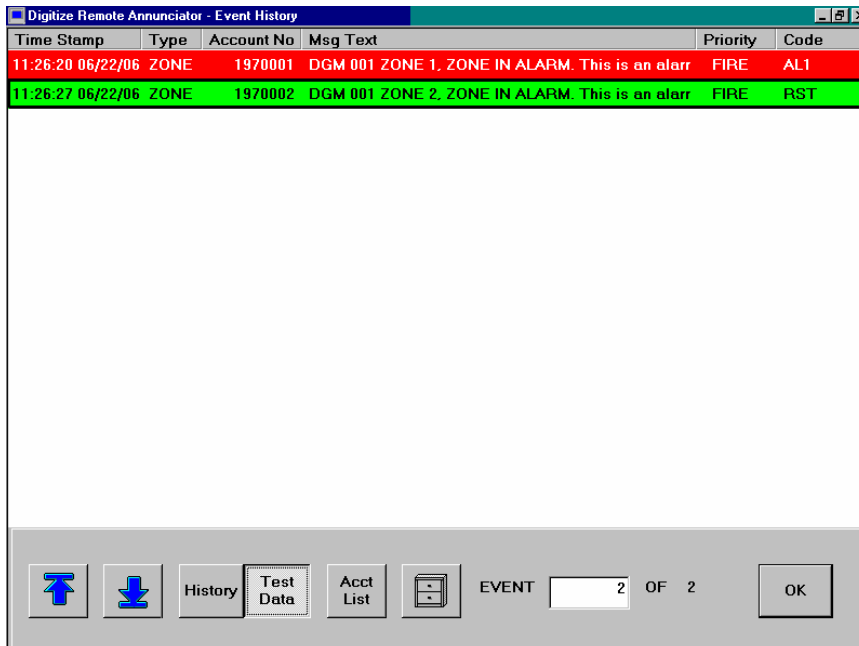
■■■■ Test Acct ZONE      3001 RST
THU   MAY 25, 2006      00:14:06
■■■■ Test Acct ZONE      3001 ALN
THU   MAY 25, 2006      00:14:04
■■■■ Test Acct ZONE      3001 TRB
THU   MAY 25, 2006      00:14:02
■■■■ Test Acct ZONE      3001 RST
THU   MAY 25, 2006      00:14:00
■■■■ Test Acct ZONE      3001 ALN
THU   MAY 25, 2006      00:13:57
■■■■ Test Acct ZONE      3001 RST
THU   MAY 25, 2006      00:13:54
ACCT: 100000000003001 PLACED IN TEST
Start here Test acct: 100000000003001 60 Min
THU   MAY 25, 2006      00:13:51
ACCT: 100000000003001 REMOVED FROM TEST
END Test acct: 100000000003001
THU   MAY 25, 2006      00:12:12
END Test acct: 20003011*****
THU   MAY 25, 2006      00:10:11
ALM= 0 T= 1 SPV= 0 O/S= 0 TST= 5 TLG= 0 RST= 0
TODAY IS THU
THU   MAY 25, 2006      23:59:59
■■■■ Test Acct ZONE      3001 ALN
WED   MAY 24, 2006      23:58:12
<<<< ACK SYSTEM          37 >>>>
WED   MAY 24, 2006      23:57:02
TRBL          SYS          37
PG1   DDI-9E / SYS3505 LINK
      IS NOW DOWN
PG2-  now in a TROUBLE state at this location
WED   MAY 24, 2006      23:56:40
Update Test acct: 100000000003001 15 Min
WED   MAY 24, 2006      23:56:13

```

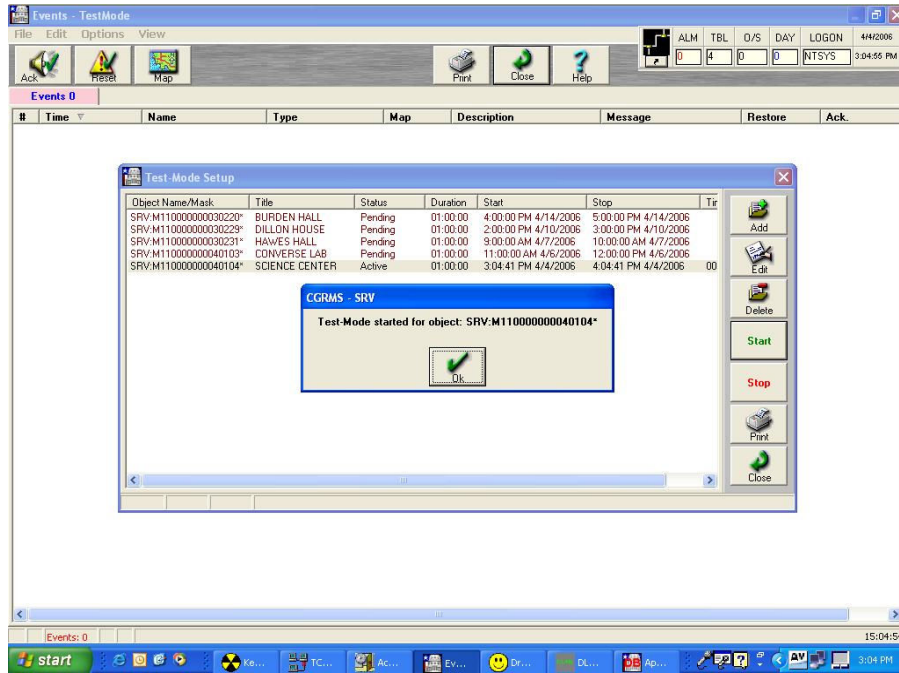
## REMOTE ANNUNCIATOR- SELECTING TEST MODE



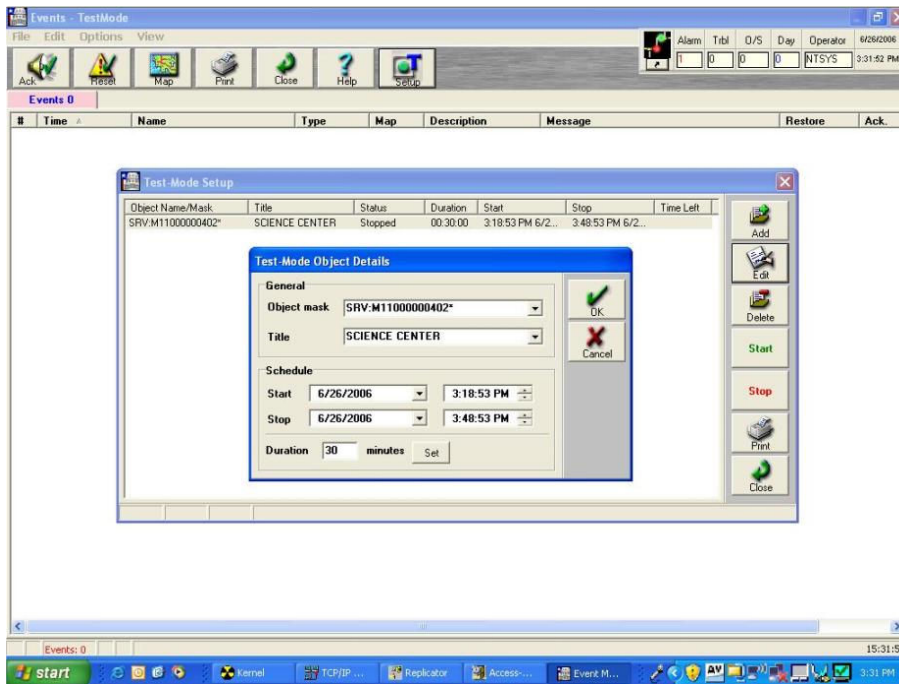
## REMOTE ANNUNCIATOR- ALARMS IN TEST MODE



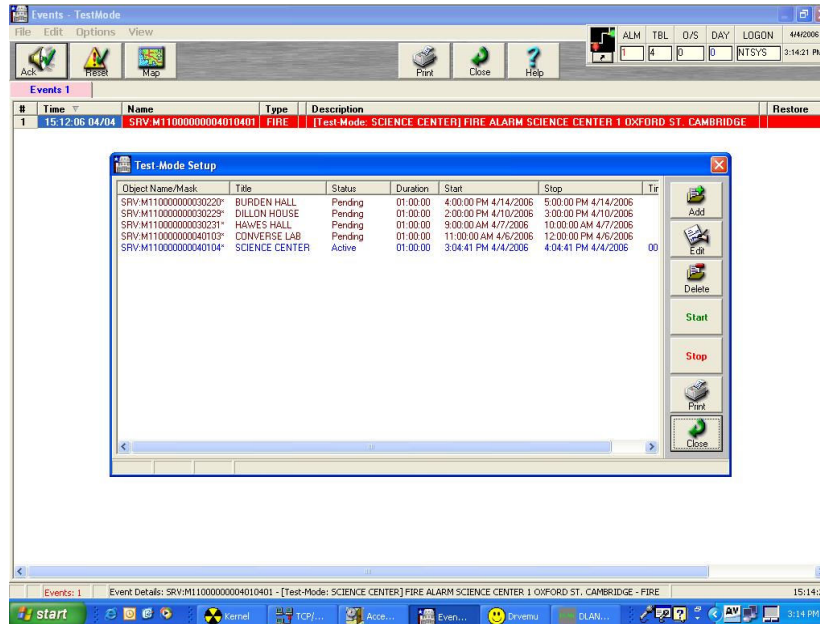
## CGRMS “TEST” MODE



## CGRMS – SELECTING ACCOUNT



## CGRMS – TEST MODE REPORT



### Pricing Information:

010000-0060	<p><b>SYSTEM 3505 “Test” Mode Option</b></p> <p>Adds the “Test” Mode Option, address specific function to a SYSTEM 3505. The “TEST” Mode will operate with any Muxpad IIs, DGMs or other alarm input. There are two types of “TEST” Mode Addresses, Generic and Alarm Point specific. The SYSTEM 3505 can accommodate unlimited DGMs, Muxpad II’s or individual alarm points in test.</p> <p><b>NOTE:</b> One “Test” Mode Option <u>must</u> be installed in each System 3505 for <u>network</u> operation.</p>	\$ 3,995.00
-------------	---	-------------