

## REMOTE ANNUNCIATOR SOFTWARE, KEY, & D-LAN OPTION

### Features

- Custom Select Actions
- Operates on all Windows® XP, 7, 8, & 10 Platforms
- Easy access to Downloadable Event and TEST History
- Resides on desktop and Pops-up during Event or on Command
- Independent Administrator and operator functions
- Alarm priority filtering
- Data export functions
- Custom Sounds & Colors
- SST Transmitting (optional)
- SMS Text-2-Cell (optional)
- In/Out of Service
- Customizable dispatchers log
- Easy Windows® drop down programming

### Included with software

- D-LAN Option, P/N 020001-0117- Included w/ 1st Remote Annunciator
- Digitize HASP key

### Requirements

- Requires customer supplied computer and monitor.
- SYSTEM 3505 Prism Lx, sold separately



SMS Text-2-Cell Option

### Product Information

The DIGITIZE Remote Annunciator Software is used to provide multiple operator interfaces for one or more System 3505 Prism Lx's.

The Remote Annunciator Software features programmable color and sound schemes (.wav files) for events, historical data and data export functions. Operating on all

Windows® XP, 7, 8, & 10 platforms, the Remote Annunciator Software links to the System 3505 Prism Lx using a standard Ethernet connection, provided by others. Multiple Computers with Remote Annunciator Software can be networked to a System 3505 Prism Lx (or networked System 3505 Prism Lx's) to provide specialized alarm monitoring by department or alarm priority e.g., separate Computers with Remote Annunciator Software for fire, security, and/or maintenance. (Computers with Remote Annunciator Software require the purchase of the Digitize D-LAN Option with SIPPDD Card, see cut-sheet 750561-0001)

The Remote Annunciator Software allows personnel to monitor all System 3505 Prism Lx activity from multiple locations. The Remote Annunciator Software allows key information to be displayed, annunciated, and acknowledged, as well as providing instant access to key alarm data. Additional capabilities include filtering by alarm priority and password protected control of access to system programming and data functions, which will prevent unauthorized changes and errors.

Operator & dispatcher benefits include: increased efficiency, notification in the event of signal interruption, the ability to export the alarm history log (in comma delineated files) to other programs (e.g., Excel or Word) for preparation of user-defined reports and providing the exact System 3505 Prism Lx data including user-defined instructions and customizable dispatchers log.

### Additional Options Available

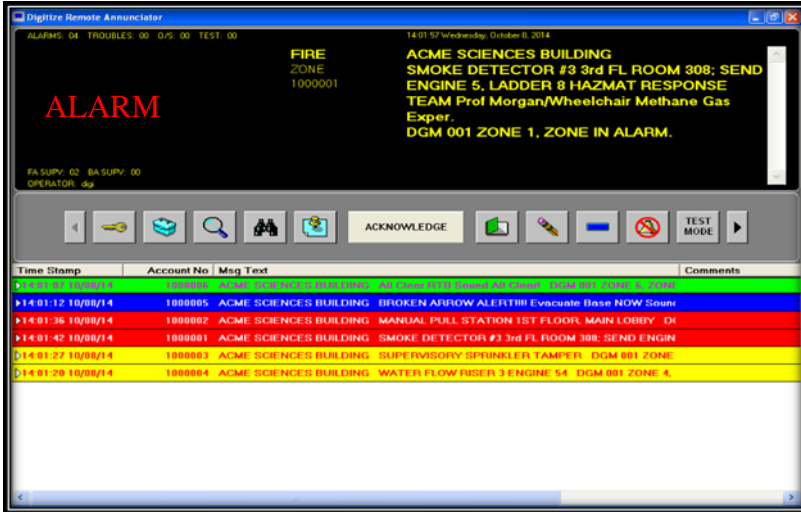
Digitize SMS Text-2-Cell Option: Small Message Service Text-2-Cell transmits alarm data and System 3505 Prism Lx user-defined text to pre-programmed groups of designated recipients for alarms, troubles, supervisory and other conditions (based on filter settings selected by user ) via a cell phone network or e-mail. Please see cut-sheet 750574-0001 for more details.

### In/Out of Service Option

SST Relay Control Option which includes the ALL OUT Feature

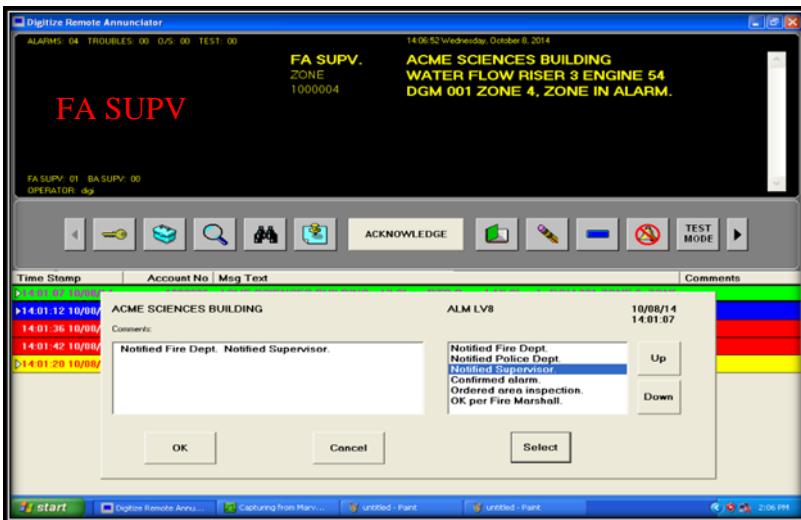


# TYPICAL SCREEN SHOTS



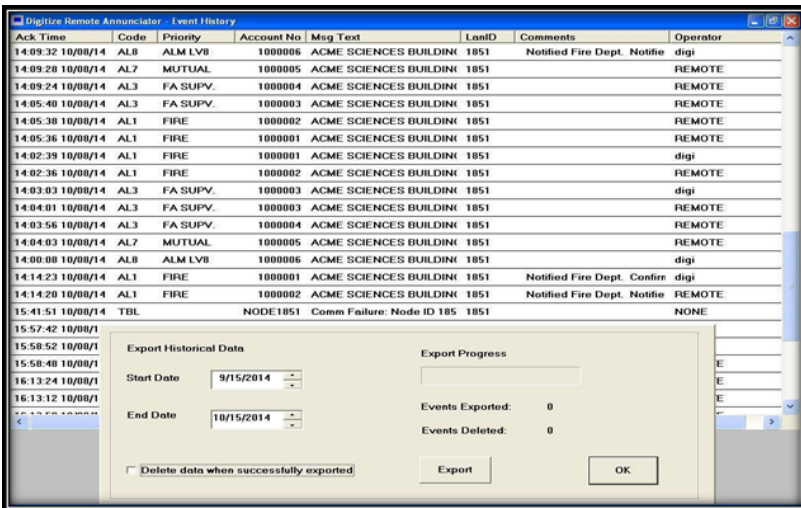
## MAIN SCREEN

1. Large Exact text as displayed on the System 3505 Prism Lx
2. Auto Population of Item Description
3. Flashing Alarm, Trouble and Supervisory Label
4. Easily understood function buttons
5. Password protected
6. Programmable custom Colors and Sound per alarm type



## DISPATCHER'S LOG SCREEN

1. Typing not required
2. Employs user-defined key phrases to explain responses to active events, thereby eliminating errors
3. Dispatcher selects key phrase(s) which are automatically entered into the event database
4. Multiple phrases can be used to describe event response
5. Password protected
6. Programmable custom Colors and Sound per alarm type



## EVENT REPORT AND EXPORT SCREEN

1. User defined Reports in Spreadsheet format
2. Separate history reports for Alarm Events and Tests
3. Reports are downloaded in comma delineated files
4. Sort by date or Alarm
5. Export by date or group of dates
6. Export to USB Devices i.e. thumb drive etc.