

Class 'A' Des Transmission Module

Model: TM5-3

Revised: April 2002

Product Description

The model TM5-3 Transmission Module provides for advanced intrusion detection and reporting functions as part of an overall physical security system. The TM5-3 performs the following functions:

- ◆ Intrusion detection sensor and area tamper data/status reporting to a monitoring facility (*i.e., Desplex Series MP5 Receiver Module*).
- ◆ Line supervision security monitoring.
- ◆ Secure area power (*battery and AC*) status monitoring.
- ◆ Secure area access verification (*i.e., reads an access control keypad or keypad/cardreader*).

All of the above functions are continuously processed in real time, formatted and encoded (*encrypted*), for transmission to a monitoring facility. The monitoring facility consists of Desplex Series MP5 Receiver Module configured in an alarm monitoring receiver rack environment (*with or without an appropriate computerized system*). All functions are processed independent of the 'mode' for the secured area (*i.e., the TM5-3 works in both the access and secure modes*).

The TM5-3 consists of an integrated, all solid state-of-the-art microprocessor based module and support interface circuits, all contained on two circuit boards.

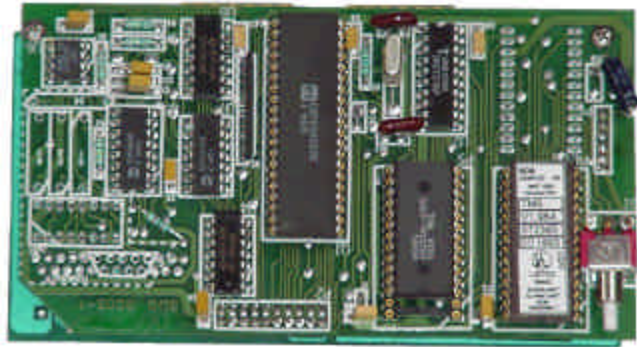
The TM5-3 Single Class 'A' high security zone alarm detection via individual tamper and alarm loops. The tamper and alarm loops consist of up to three discrete alarm dry contact output devices (*i.e., six discrete contacts*). Any of the tamper or alarm loop contacts can be annunciated at the accompanying MP5-3.

Product Features

The following summarizes many of the standard features of the Desplex TM5-3 Access/Secure Transmission Module.

- ◆ Microprocessor based design provides for flexible functionality while onboard diagnostics assure reliable and virtually "turnkey" operation.
- ◆ DIAM 50-3, DCID 1-21 and United States Reg. 381-14 approved high line supervision (*Class 'A' DES digital IAW Fed. Std. 1027*).
- ◆ No manual adjustments of any kind, either on-line (*operational*) or off-line (*diagnostics mode*).
- ◆ Multi-level electrical transient/noise protection and "anti-latchup" circuit.
- ◆ Floating (*transformer isolated*) signal lines to the secured area.
- ◆ Automatic resynchronization (*with momentary annunciation*) of the communications link between the MP5 and the secured area termination equipment.
- ◆ Communications to secured area termination equipment over a single unconditioned signal pair with NO line distancing restrictions.
- ◆ Remote test driver circuit for a detection/sensor equipment remote test configurations.

(continued on reverse side)



TM5-3

Class 'A' DES Transmission Module

Product Specifications

Height = 3.150 inches
Width = 5.50 inches
Depth = 1.00 inches
Weight = 4 ounces

*UL Listed No. 1076 and 1610

ORDER: See Ordering Information on next page

Digitize, Inc.

CUTSHEET P/N 750405 REV. A 03/02

158 Edison Road, Lake Hopatcong, NJ 07849
Phone: 973-663-1011 • Fax: 973-663-4333
Email: info@digitize-inc.com • Website: www.digitize-inc.com

Product Features (cont.)

- ◆ All detection loop data 'electronically filtered' (*debounced*).
- ◆ Separate detection of IDS alarm loop alarms.
- ◆ Separate detection (*with local annunciation*) or tamper loop alarms.
- ◆ Separate annunciation of mode change alarms.
- ◆ Separate detection (*with local annunciation*) of line supervision alarms from the TM5-3 to the monitoring facility monitor panel.
- ◆ Separate detection (*with local annunciation*) of line supervision for the IDS alarm and tamper loops.
- ◆ Separate detection (*with local annunciation*) of synchronization/DES key mismatch alarms.
- ◆ Separate detection of keypad configured systems for duress alarms.
- ◆ Separate detection of keypad configured systems failed attempts alarms.
- ◆ MIL spec quality control and plug compatible with Wells Fargo, IRA and other industry standard systems.
- ◆ User configurable DES encryption key.
- ◆ Fiber Optic and wireless (*radio*) communications link compatible.
- ◆ Easily enhanced/customized/updated via simple software changes.
- ◆ Comprehensive event logging/recording capability.
- ◆ Keypad mode select capability.
- ◆ Local (*secured area*) driver circuit capability to allow for local bell/siren annunciation.
- ◆ Local (*secured area*) printer capability.

Optional

- ◆ Terminal interface/microkey loader (KL5) option. Used for ease of user configuring of DES encryption key loading and diagnostics/troubleshooting. Comes with all appropriate RS-232 interface/cabling.
- ◆ Interface and expansion module (IXM5), used for local (i.e., within the secured area) event logging/security management host computer functions, keypad PIN storage expansion memory (for up to 74 PINS's) and card access control equipment interfacing.